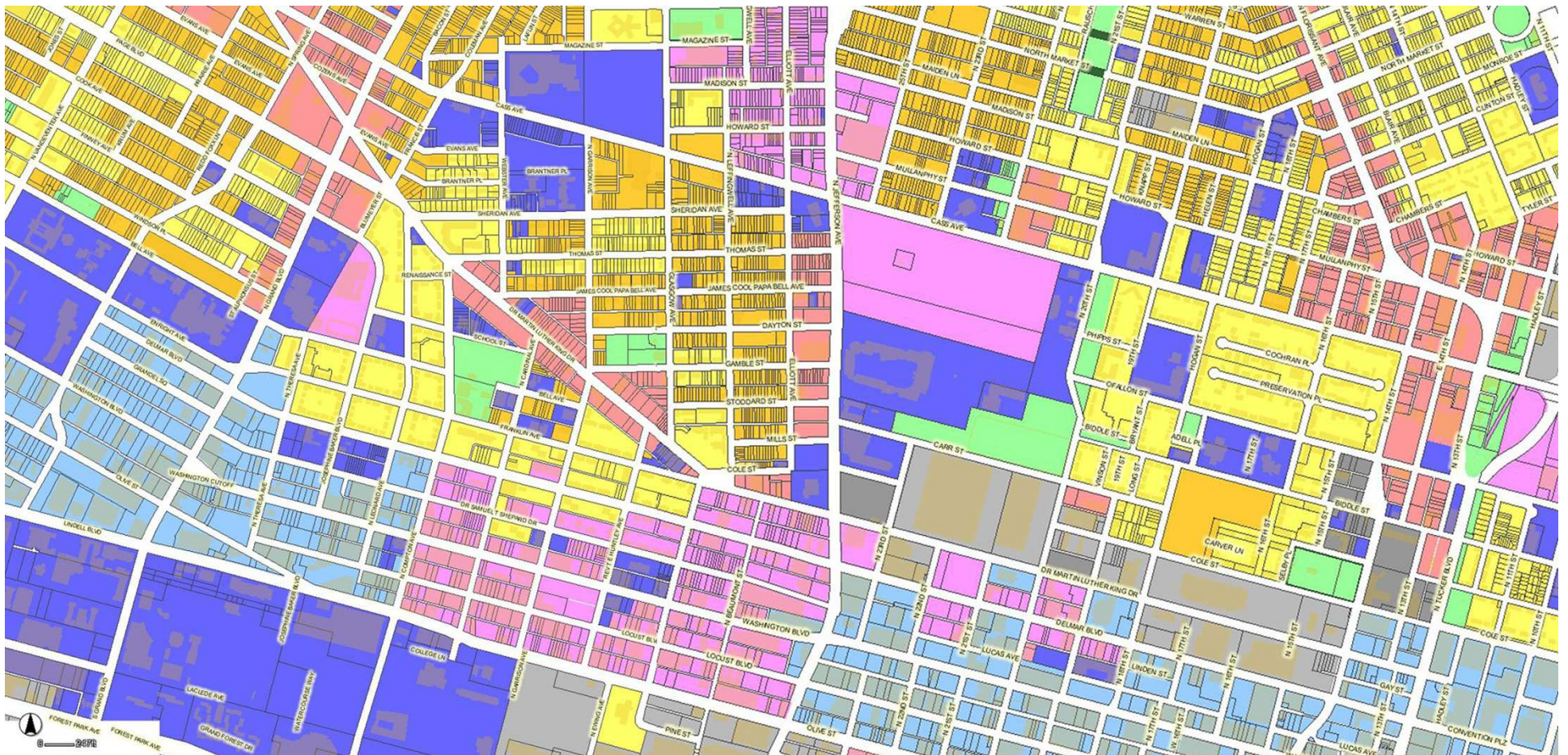






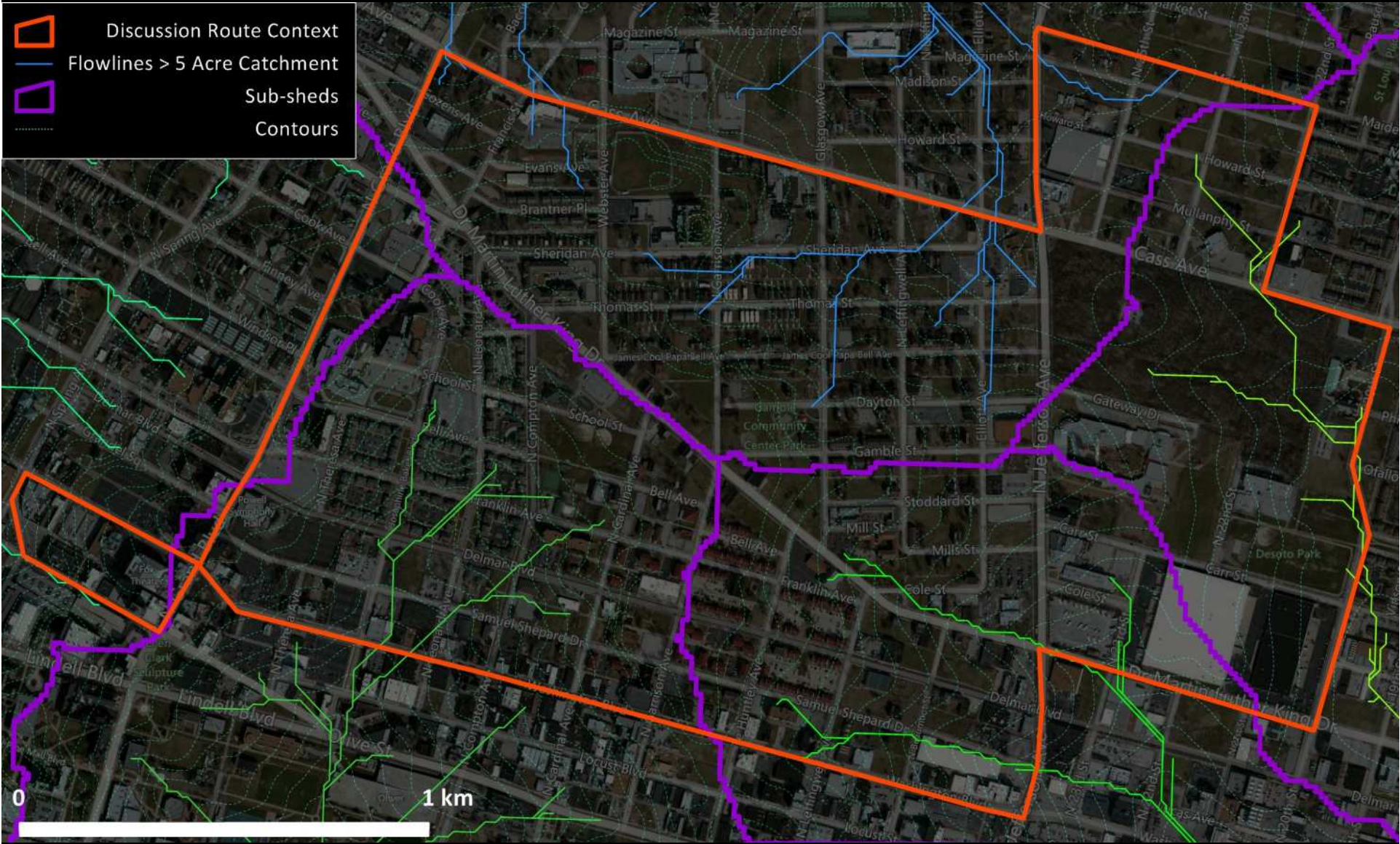
1912



- Business and Industrial Development Area
- Neighborhood Preservation Area
- Business and Industrial Preservation and Development Area
- Opportunity Area
- Institutional Preservation and Development Area
- Regional Commercial Area
- Neighborhood Commercial Area
- Recreational and Open Space Preservation and Development Area
- Neighborhood Development Area
- Specially Mixed Use Area



 Discussion Route Context  
 Flowlines > 5 Acre Catchment  
 Sub-sheds  
 Contours



0 1 km



Discussion Route Context



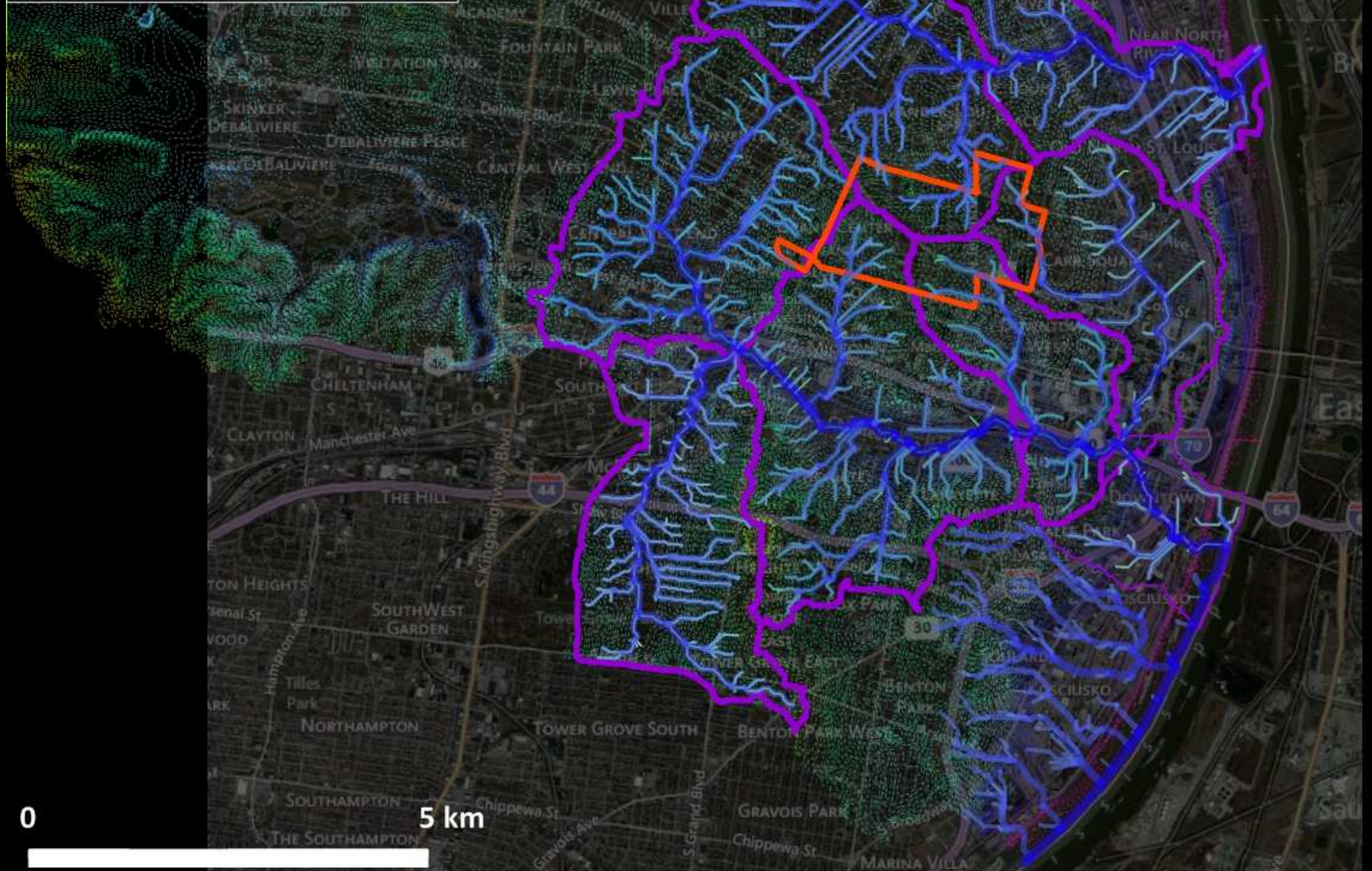
Flowlines > 5 Acre Catchment



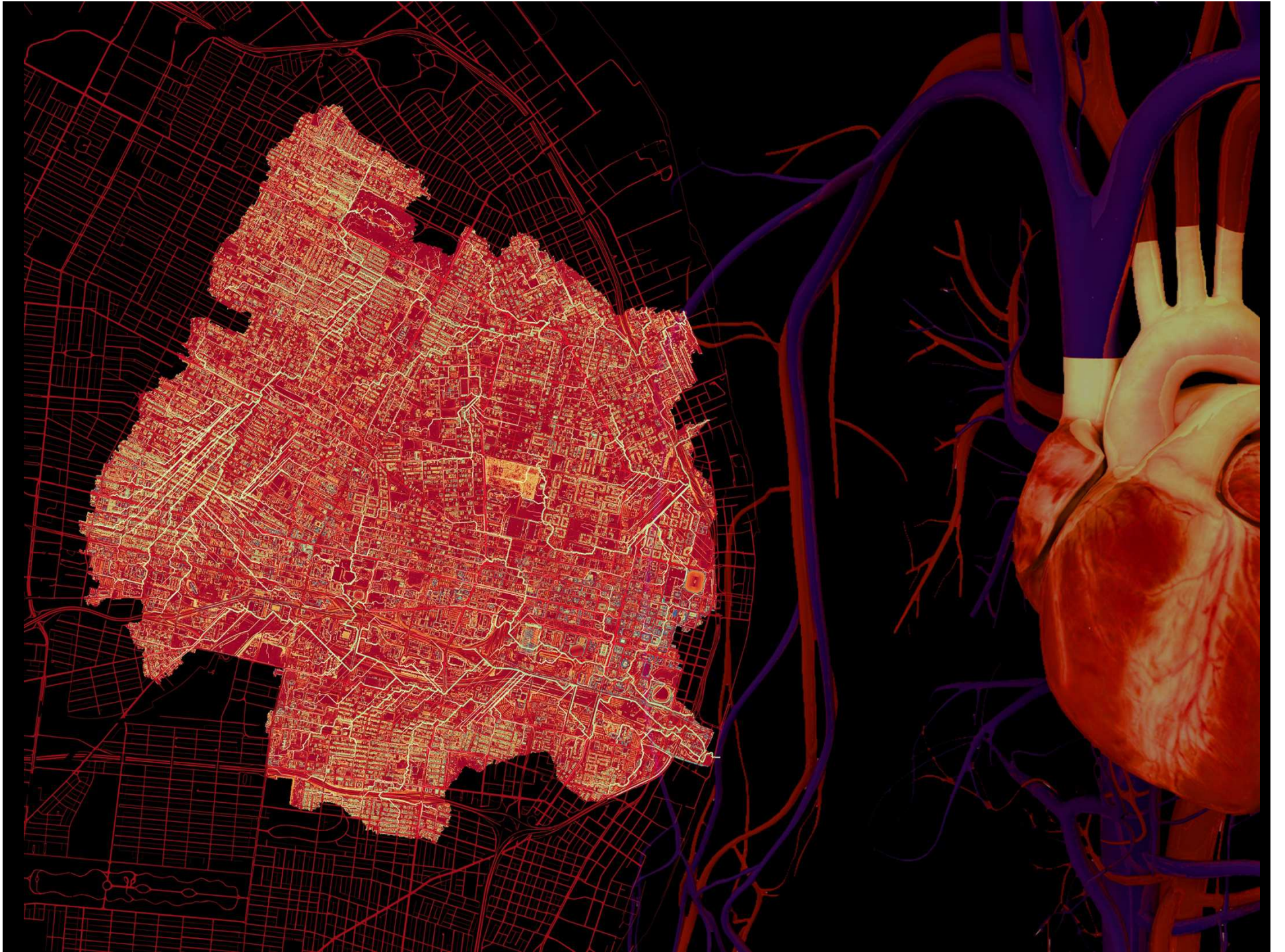
Sub-sheds



Contours





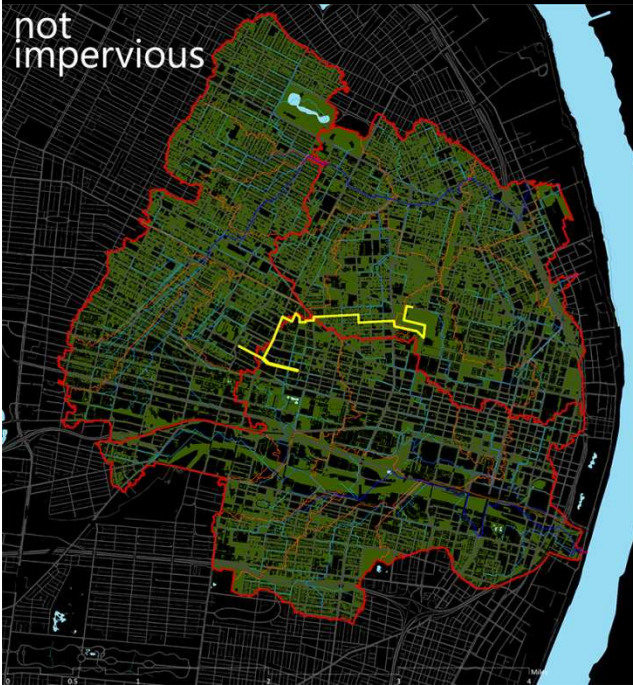








not  
impervious



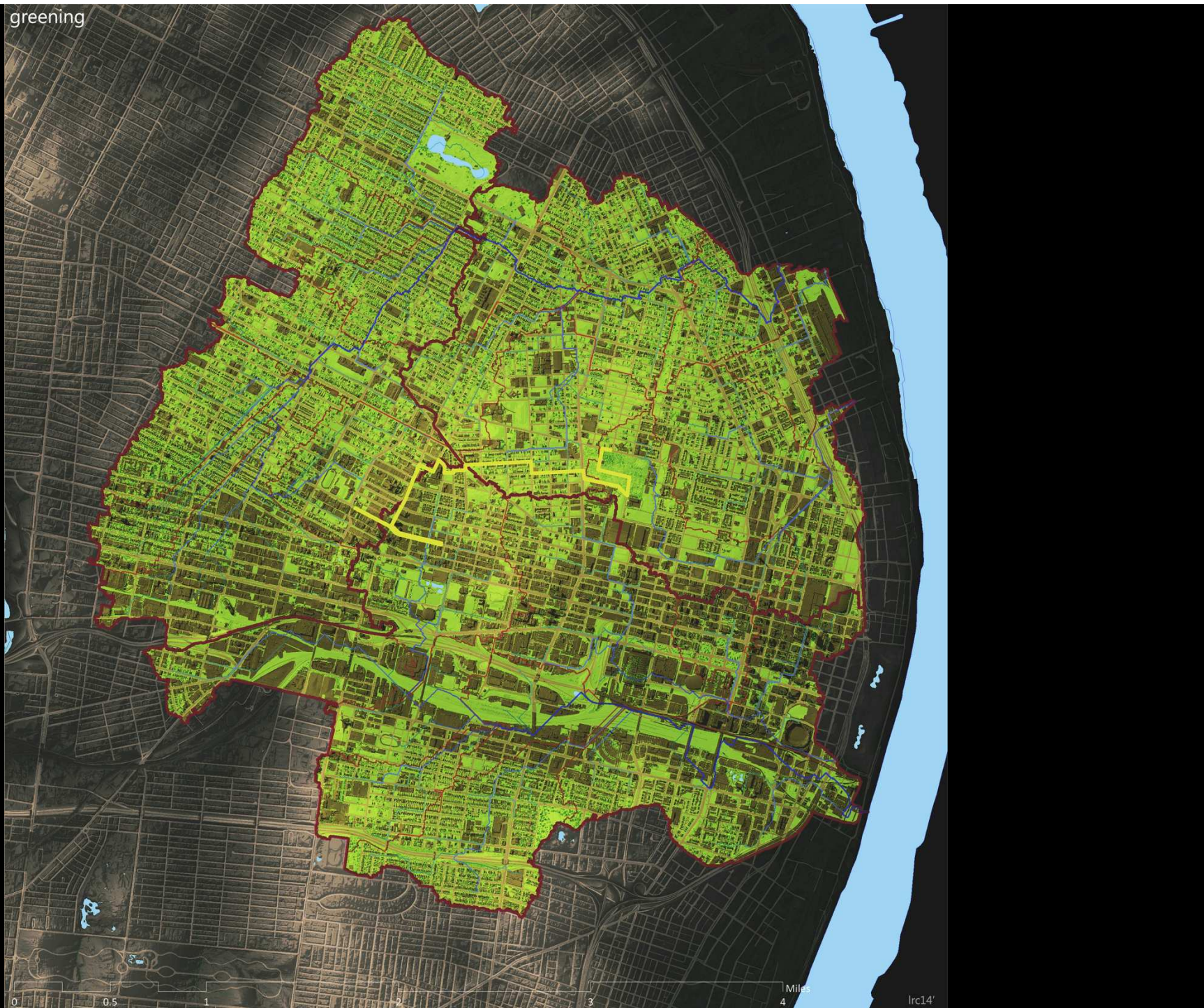
tree  
detection



hillshade



greening

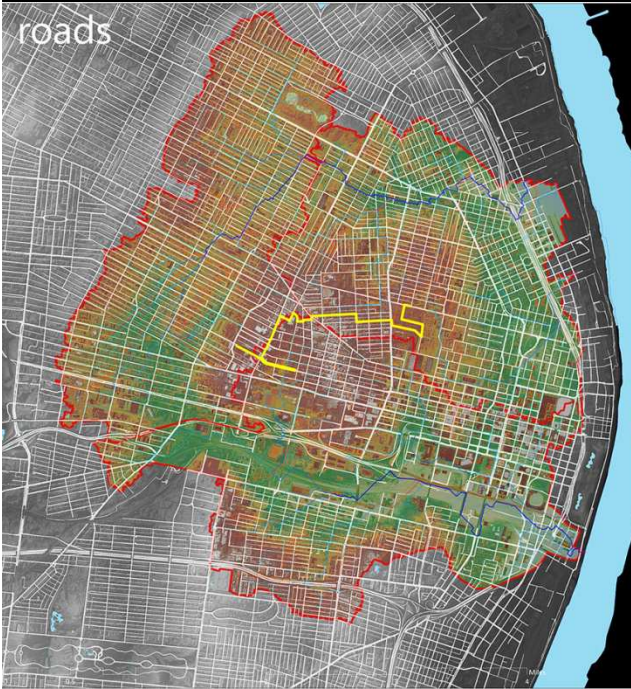


0 0.5 1 2 3

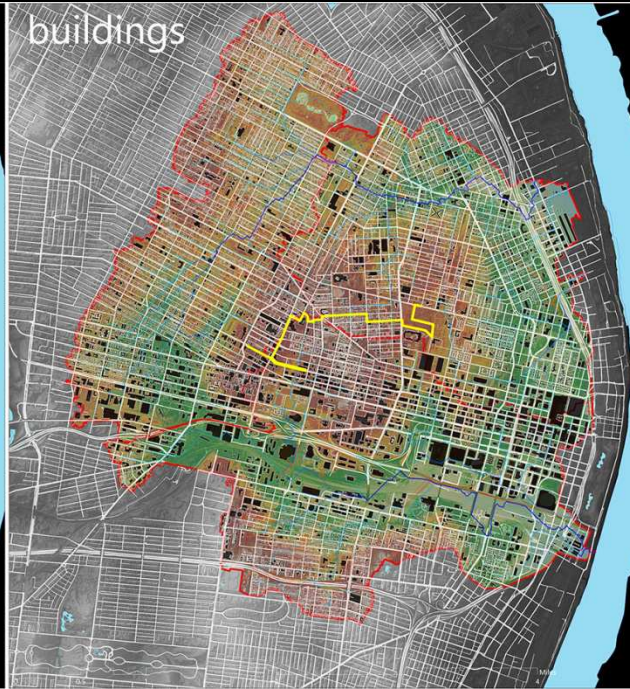
Miles  
4

Irc14'

roads



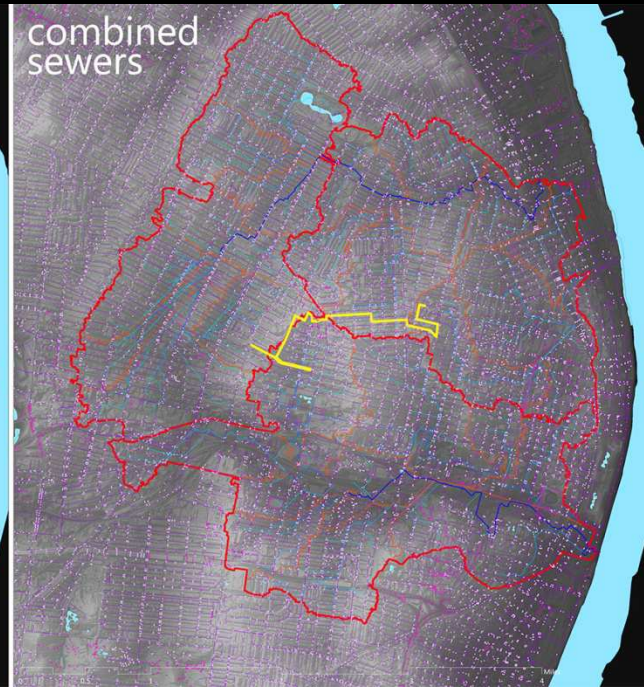
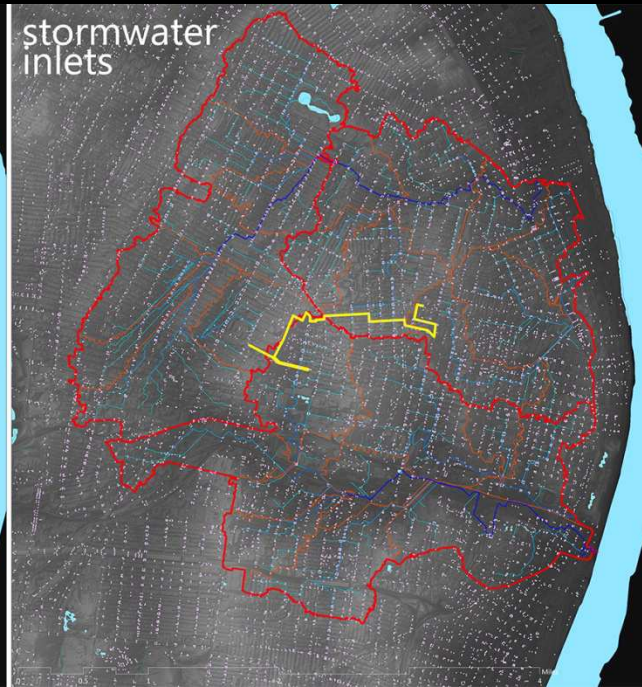
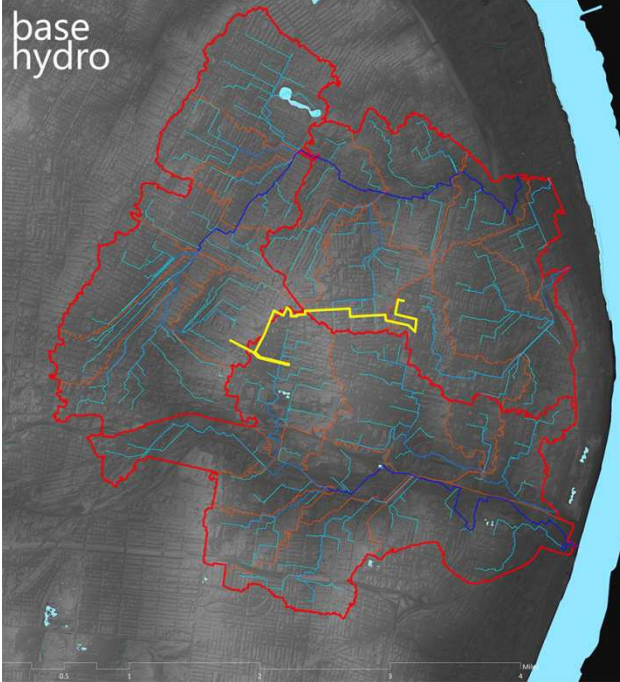
buildings



parking







over  
underdrained

